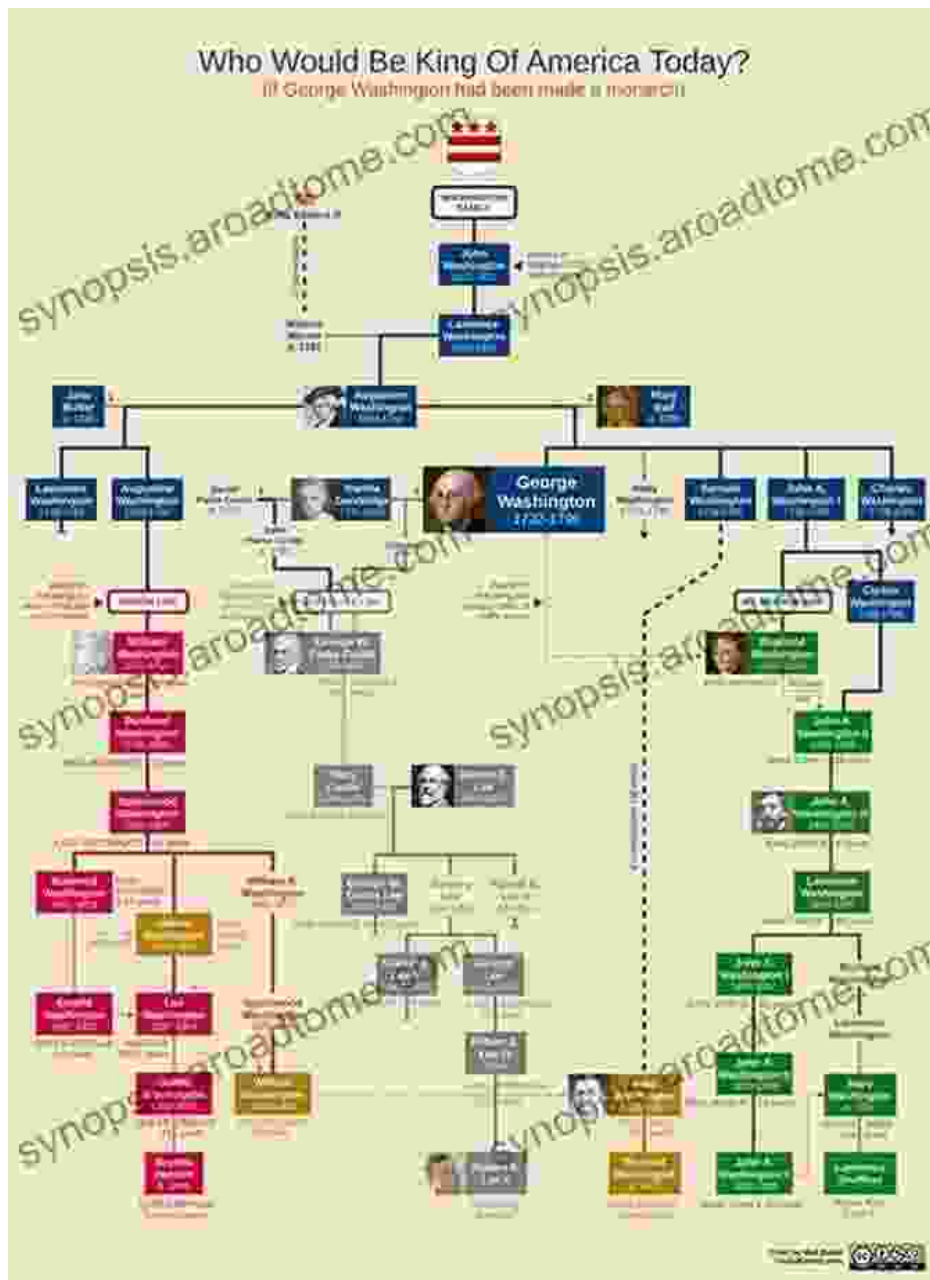
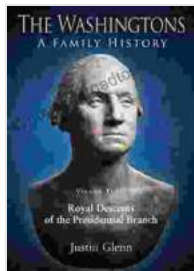


# Royal Descents Of The Presidential Branch: The Washingtons



George Washington, the first president of the United States, was a descendant of several royal families, including the Plantagenets, Tudors, Stuarts, and Hanovers. His royal ancestry can be traced back to King

Edward I of England, who reigned from 1272 to 1307. Edward I was a direct descendant of William the Conqueror, who invaded England in 1066 and established the Norman dynasty.



## The Washingtons. Volume 3: Royal Descents of the Presidential Branch (The Washingtons: A Family History) by Justin Glenn

★★★★★ 5 out of 5

Language : English  
File size : 2191 KB  
Text-to-Speech : Enabled  
Screen Reader : Supported  
Enhanced typesetting : Enabled  
Word Wise : Enabled  
Print length : 433 pages  
Lending : Enabled



George Washington's mother, Mary Ball Washington, was a descendant of the Ball family of Virginia, which had close ties to the British aristocracy. Mary Ball's great-grandfather, Colonel William Ball, was a close friend of Robert Carter, a wealthy planter and politician who served as the colonial governor of Virginia. Carter was a descendant of the Wyatt family, which had close ties to the British royal family.

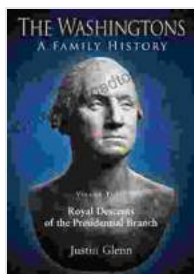
George Washington's father, Augustine Washington, was a wealthy planter and politician who served as a justice of the peace and a member of the Virginia House of Burgesses. Augustine Washington's great-grandfather, John Washington, was a descendant of the Washington family of Sulgrave,

Northamptonshire, England. The Washingtons of Sulgrave were a prominent family that had close ties to the British royal family.

George Washington's wife, Martha Dandridge Custis, was a wealthy widow who was descended from several prominent Virginia families, including the Dandrighes, Custises, and Carters. Martha Dandridge Custis's great-grandfather, Robert Carter, was a wealthy planter and politician who served as the colonial governor of Virginia. Carter was a descendant of the Wyatt family, which had close ties to the British royal family.

George Washington and Martha Dandridge Custis had two children, John Parke Custis and Martha Parke Custis. John Parke Custis died in 1781 at the age of 26, and Martha Parke Custis died in 1802 at the age of 29. George Washington and Martha Dandridge Custis had no grandchildren.

George Washington's royal ancestry is a testament to the close ties between the United States and Great Britain. The United States was founded on the principles of democracy and republicanism, but the country's founders were still proud of their British heritage. George Washington's royal ancestry is a reminder of the complex and often contradictory relationship between the United States and Great Britain.



## **The Washingtons. Volume 3: Royal Descents of the Presidential Branch (The Washingtons: A Family History)** by Justin Glenn

★★★★★ 5 out of 5

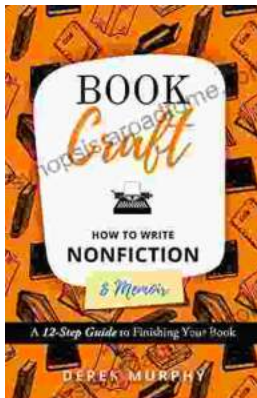
Language : English  
File size : 2191 KB  
Text-to-Speech : Enabled  
Screen Reader : Supported  
Enhanced typesetting : Enabled  
Word Wise : Enabled

Print length : 433 pages  
Lending : Enabled



## Unveiling the Enchanting World of Customs and Crafts: Recipes and Rituals for Festivals of Light

Embark on a captivating journey through the vibrant tapestry of customs and crafts entwined with the enchanting Festivals of Light: Hanukkah, Yule, and Diwali. This...



## How to Write a Nonfiction Memoir: The Bookcraft Guide

Have you ever wanted to share your story with the world? A nonfiction memoir is a powerful way to do just that. But writing a memoir can be a daunting...